

High Speed Non-Stop Labeling for Beer bottles and cans

This labeling system was designed to provide high speed, zero downtime labeling of beer bottles and cans in harsh, wet environments. It is also suited for other beverage products such as bottled water or juices.

The vertical roller product handling system uses four points of contact to square and align the surface of the container. This technology ensures label spiral is minimized. A production rate of 300 ppm with pinpoint accuracy is possible with this system.

Redundant label applicators provide non-stop, zero downtime labeling. The system automatically switches from one applicator to another and alerts the operator to splice a new roll without stopping the production line.

System features include servo driven product handling and label feed, Allen-Bradley® PLC control, color touchscreen and Ethernet connection. All electronics are safely mounted above the conveyor for ease of service and protection from the environment.



- Suitable for harsh, wet, multi- shift environments
- Allen-Bradley® PLC control with color touchscreen HMI
- Servo driven product handling and label feed
- Ethernet connection provides real time system status



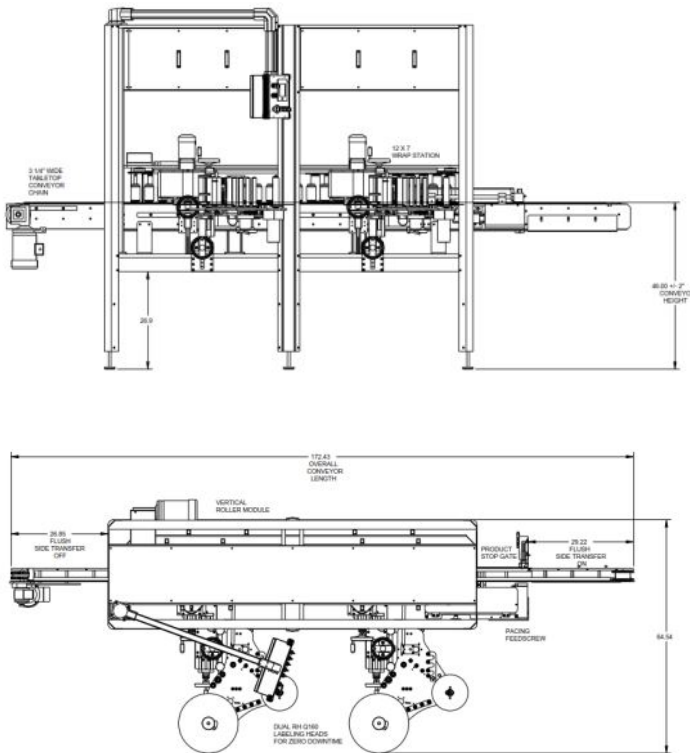
Capabilities

QUALITY / FLEXIBILITY

ProLine suitable for multi-shift operations where long-term reliability is important. All critical components are designed with 24/7 reliability.

ADVANCED CONTROLS

The ProLine vertical roller features Allen-Bradley® PLC control with color touchscreen HMI. Equipped with servo driven label applicators that provide unsurpassed speed accuracy. Instant real time system status and machine coordination are now possible with the included Ethernet connection.



STANDARD FEATURES

SYSTEM

- Allen-Bradley® PLC and touch screen HMI
- 3-1/2" width x 192" length conveyor
- Sealed electrical enclosure
- Production Rate: Up to 300 products per minute (dependent upon label/product dimensions)
- Applied Accuracy: Up to +/-1/32" @ Sigma 2 (exclusive of product variation)
- Standard product pitch: 3.75"

LABEL APPLICATOR

- Servo driven label drive
- Powered waste rewind
- Encoder-based speed compensation
- Rugged stainless steel/aluminum construction
- Precision sealed bearings
- Outboard supported drive for long-term reliability
- 16" label unwind for less frequent roll changes
- Push pull label drive

OPTIONS

- Full system guarding with Interlock
- Missing label on product with ejection
- Bar code verification with ejection
- Customer specified vision systems
- Left or Right hand versions
- Low label detection
- End-of-web detection
- Broken web detection
- Thermal transfer, laser, or hot stamp imprinter
- Clear label detection
- 20" label unwind capacity
- Consult factory for additional options



Scan to view video



QUADREL
LABELING SYSTEMS