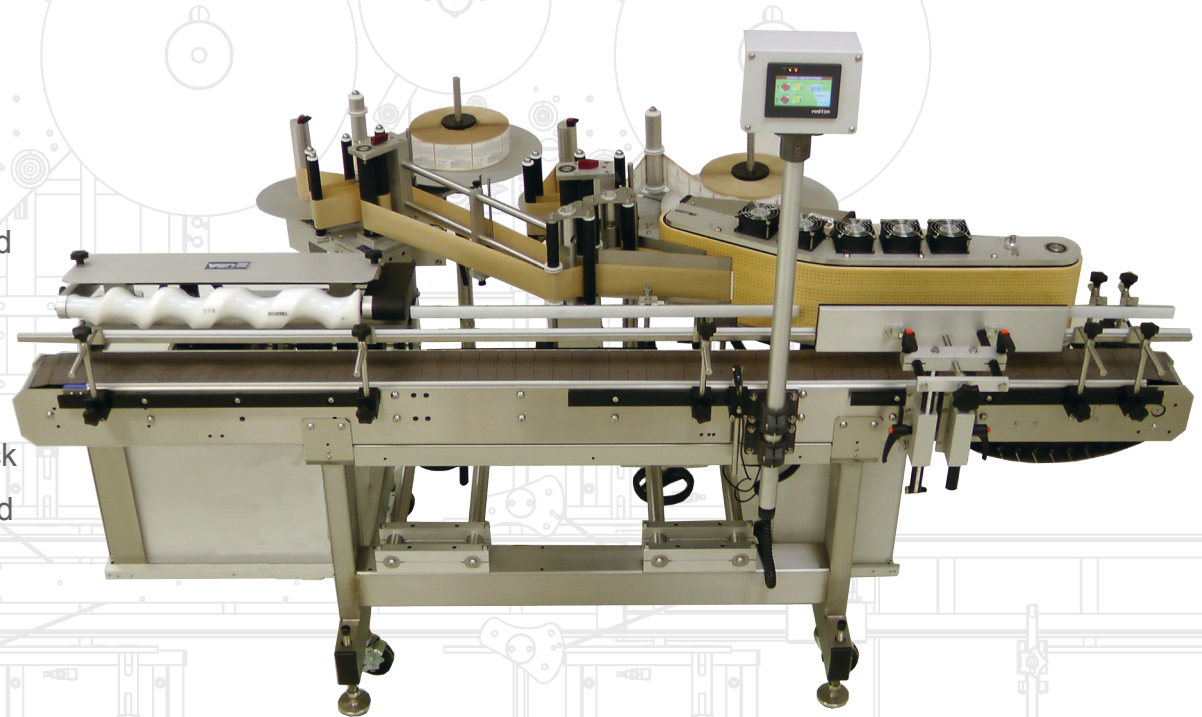


VACUUM WRAP Labeling System

The Quadrel Vacuum-Wrap Wine labeling system is a compact, rugged labeler designed specifically for the needs of mobile bottling lines, wine oriented contract packagers and medium sized wineries.

The most unique feature of this system is the vacuumed wrap station. This allows front and back labels, dispensed from separate rolls, to be applied to round containers at speeds up to 160 ppm.

This rugged, reliable labeling system is priced below comparable systems and features stainless steel construction, color touch screen operator interface and 'on the fly' label gap adjustment.



- Suitable for harsh/ multi- shift environments
- Allen-Bradley® PLC with color touchscreen
- 50 programmable product presets
- Encoder-based speed compensation
- AC inverter control product handling
- Applicator features high-torque stepping motor label drive
- "On the fly" label gap adjustment

Capabilities

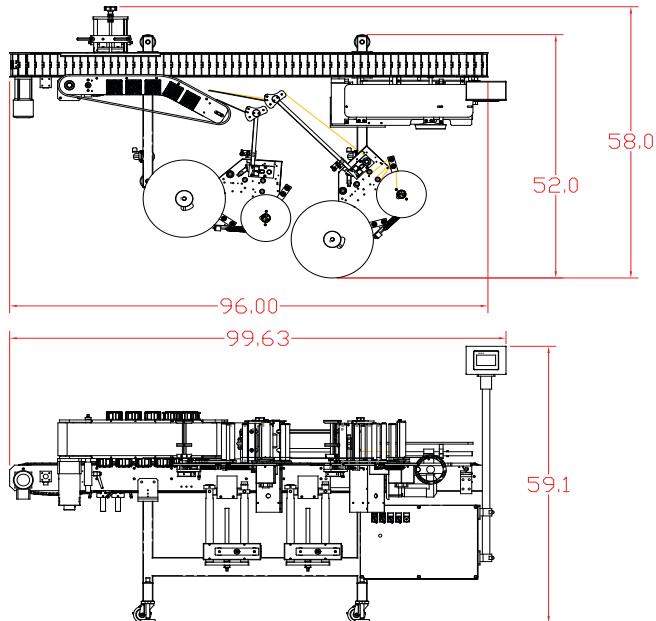
QUALITY / FLEXIBILITY

The Vacuum-Wrap is a heavy duty, technically advanced labeling system designed specifically for needs of the wine industry. The unique design of the vacuum wrap station allows front/back labels, dispensed from separate rolls, to be applied to round contains at up to 160 products per minute.

Quality construction and competitive price make this system ideal for mobile bottling lines, contract packagers or medium sized wineries.

ADVANCED CONTROLS

The control package of the Vacuum-Wrap features color touch screen operator interface, AC Inverter controlled product handling and memory for 50 label/product presets. These features simplify operation and greatly reduce product changeover time.

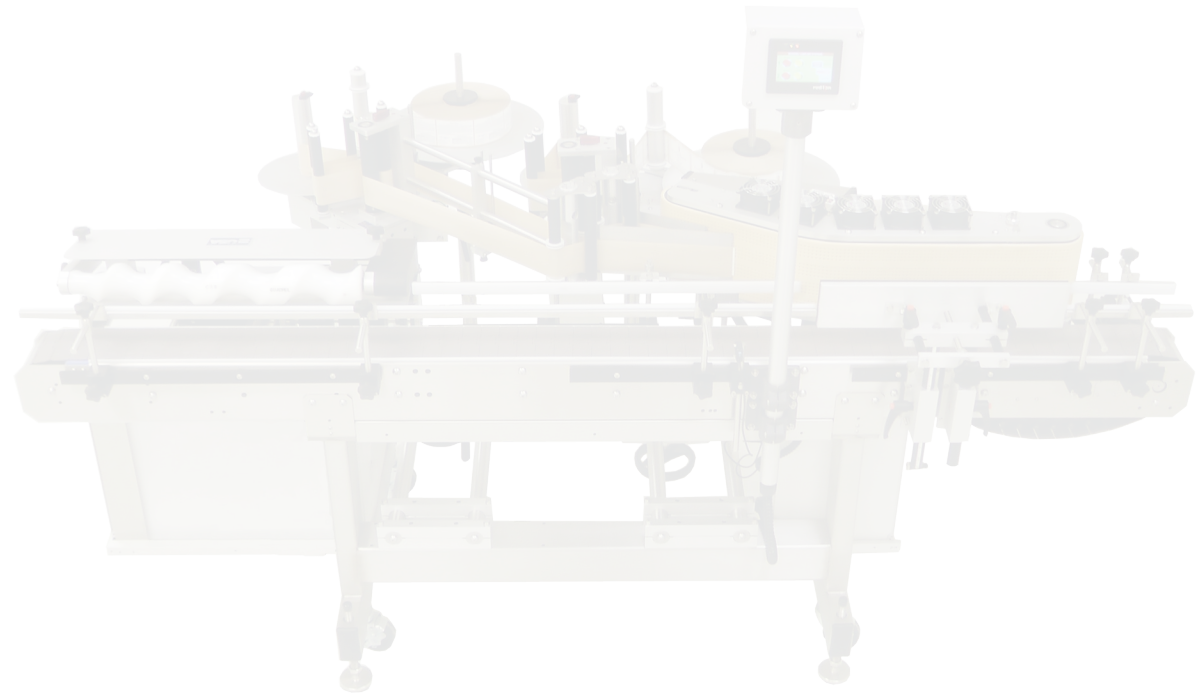


STANDARD FEATURES

- Touchscreen Operator Interface
- Digital AC inverter controlled product handling
- Intelligent stepping motor label drive
- 4-1/2" width x 96" length x 34" height conveyor
- Vacuum wrap station
- Stainless steel welded frame
- Production Rate: Up to 160 products per minute
- Applied Accuracy: Up to $\pm 1/32"$ @ Sigma 2 (exclusive of product variation)
- 7" web width (6 7/8" max. Label width)
- Unwind: 16" O.D. Standard, 3" I.D. Core
- Dispensing Speed: up to 2200" per minute

OPTIONS

- Full guarding with Interlock
- Missing label on product with ejection
- Vision system integration
- Low label detection
- End-of-web detection
- Broken web detection
- Thermal Transfer, Laser, or Inkjet printer
- Hot stamp imprinter
- Clear label detection
- Bar Code Scanner
- Consult factory for additional options



QUADREL
LABELING SYSTEMS